

EXPLODED VIEW DRAWING & PARTS LIST

MY7-TR1030L

MY8-TR0205L

MY7-TR1030P

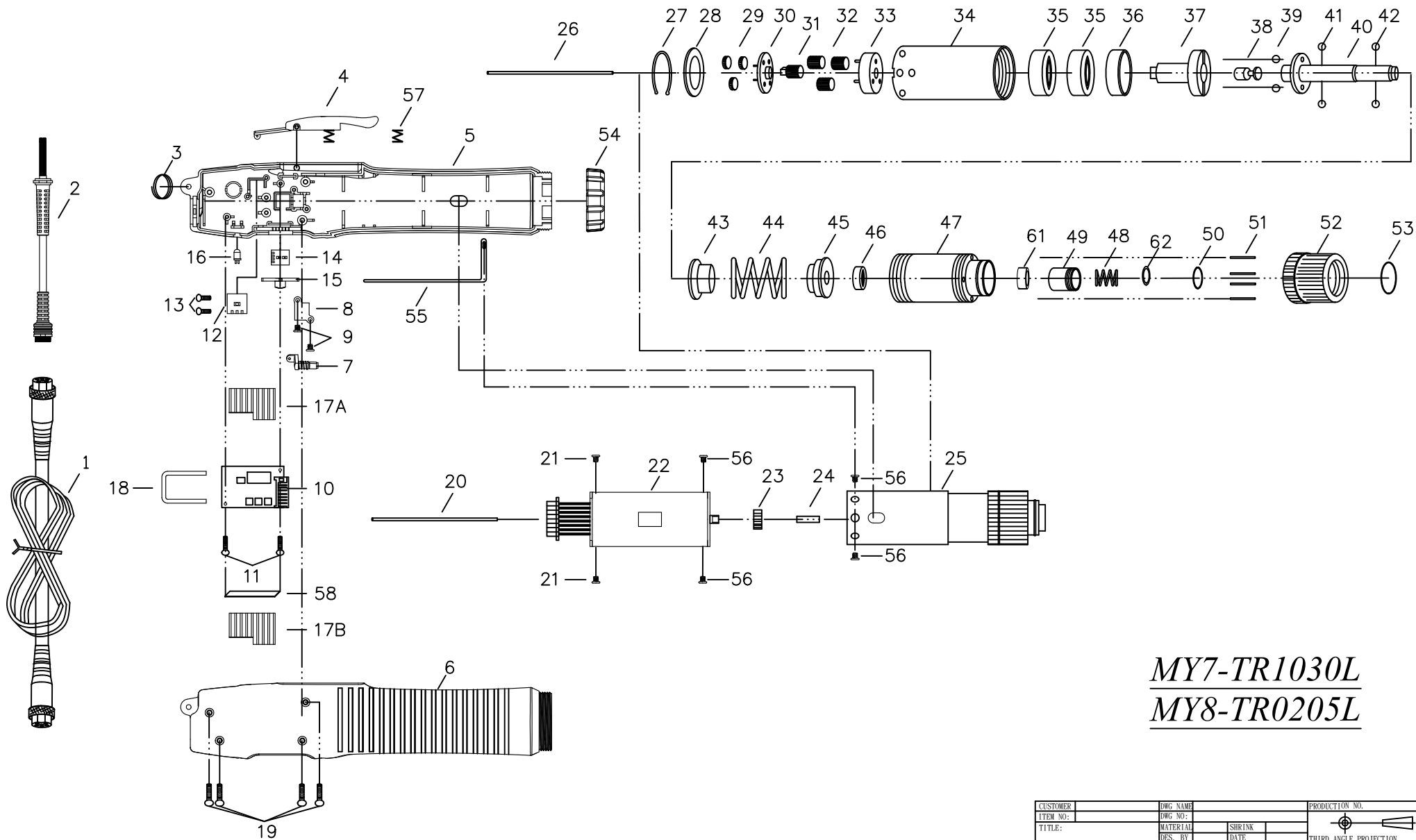
MY8-TR0205P

DC-TYPE Automatic Non Carbon-Brush Series

ANLIDAR INDUSTRIAL CO., LTD.

<http://www.anlidar.com>

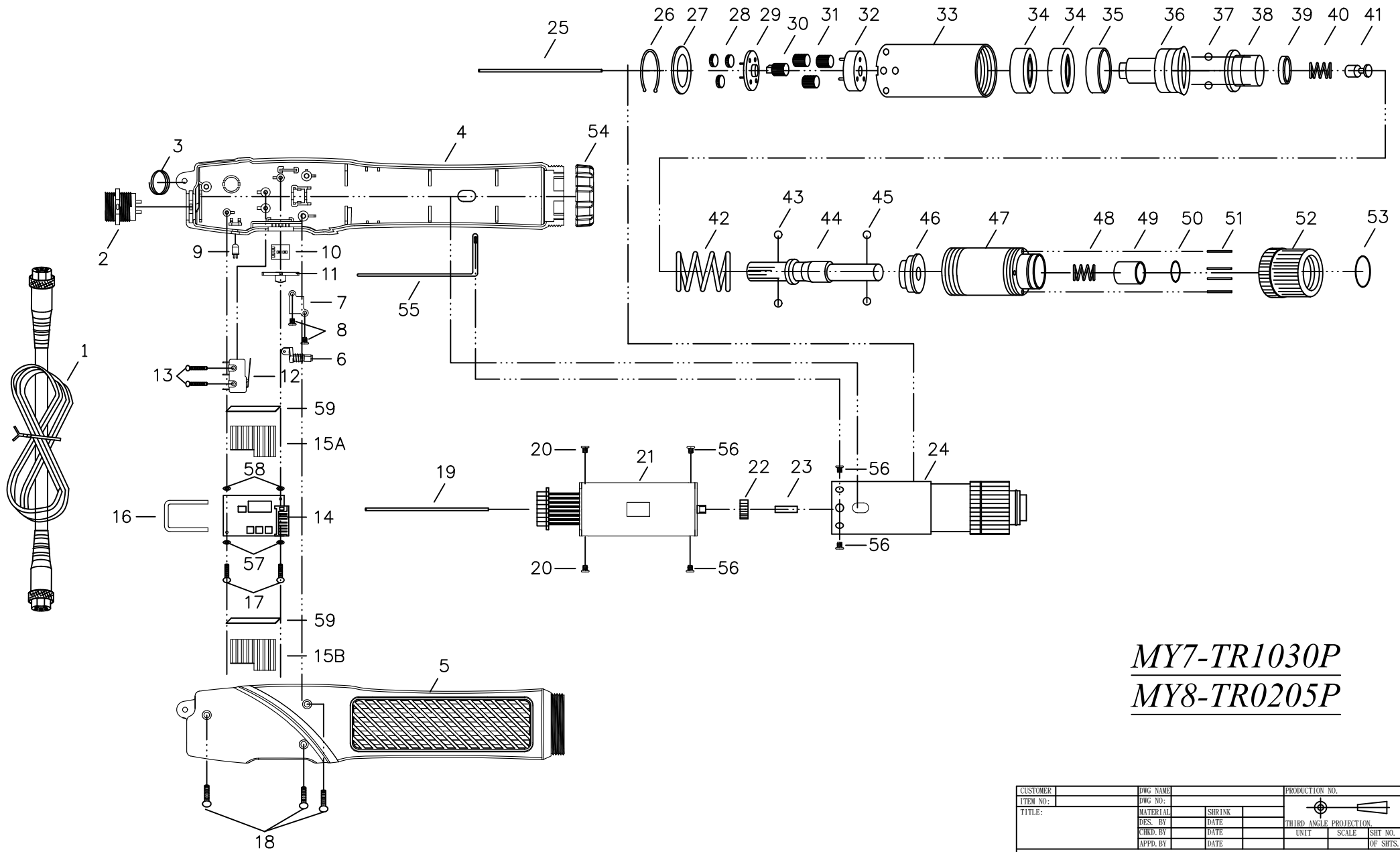




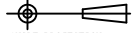
MY7-TR1030L
MY8-TR0205L

CUSTOMER	DWG NAME	PRODUCTION NO.		
ITEM NO:	DWG NO:	 THIRD ANGLE PROJECTION		
TITLE:	MATERIAL			SHRINK
	DES. BY			DATE
	CHKD. BY			DATE
	APPD. BY			DATE
		UNIT	SCALE	SHT NO.
				OF SHITS.

NO	PARTS NO	PARTS NAME-E	PARTS NAME-C	Q'ty	NO	PARTS NO	PARTS NAME-E	PARTS NAME-C	Q'ty
1	AA50005A-B6P-7N	CORD ASSEMBLY 3M "I/O Signal Control Box" TYPE	電源線 3M (訊號傳輸控制裝置)	1	27	GK21181	"C" RING	齒輪固定C環	1
2	AA50001-169-1N	CORD ASSEMBLY-150mm	檔尾線-150mm	1	28	GI21191	IRON WASHER	齒輪固定片	1
3	CJ20011-4	SUSPENSION RING	起子吊環	1	29	GH92238	IDLE GEAR	上游星齒輪	3
4	CC50020-2	TRIGGER ASSEMBLY	手按開關半成品	1	30	GG21514	GEAR SEAT	三點上齒盤	1
	CC50020-3	TRIGGER ASSEMBLY FOR-ESD	手按開關半成品-防靜電	1	31	G20112	CENTRAL GEAR	中心齒	1
5	C40791-8F	HOUSING-UNDERSIDE	下蓋半成品	1	32	GH92238-1	IDLE GEAR	下游星齒輪	3
	C40791-18F	HOUSING-UNDERSIDE-ESD	下蓋半成品-防靜電	1	33	GG21514-1	GEAR SEAT	三點下齒盤	1
6	CA80004	HOUSING-UPSIDE	上蓋	1	34	GA81101	GEAR CASE	上離合器筒	1
	CA80004-2	HOUSING-UPSIDE-ESD	上蓋-防靜電	1	35	GN21251	MAIN BEARING	離合器主軸承	2
7	CE50152-7	PUSH ROD	開關推桿半成品	1	36	GW21532	IRON RING	鐵墊圈	1
8	CE80001	FIXTURE	三合一固定片	1	37	GC90305A	CAM	上離合器頭	1
9	CH30200	SCREW FOR FIXTURE	三合一固定片螺絲	2	38	GU30371	STOP PILOT	停止用酒杯	1
10	EG31537-10A-2.0	PCB-MY7-TR1030L	機板成品-MY7-TR1030L	1	39	GP30361	STELL BALLS (5 φ)	跳脫鋼珠 (5 φ)	3
	EG31537-1A-2.0	PCB-MY8-TR0205L	機板成品-MY8-TR0205L	1	40	GD91408-2	SHAFT-A TYPE	傳動軸-A	1
11	CH90154	SCREW	螺絲	2		GD91404-4	SHAFT-B TYPE	傳動軸-B	1
	CH20510	SCREW-ESD	螺絲-防靜電	2		GD91404-5	SHAFT-B9.5 TYPE	傳動軸-B9.5	1
12	EG31420-16AF	START SWITCH	啟動開關半成品	1	41	GP30351	STELL BALLS (4 φ)	酒杯鋼珠 (4 φ)	2
13	CH30201	SCREW	螺絲	2	42	GP21291A	STEEL BALLS-A TYPE(3 φ)	起子頭帽鋼珠-A(3 φ)	2
14	EG31421-8F	PCB-CHANGEVER	機板成品(正反)	1		GP21291B	STEEL BALLS-B TYPE(2.5 φ)	起子頭帽鋼珠-B(2.5 φ)	2
15	CI50212-1	F/R SWITCHING ELEMENT-MY7-TR1030L	正反轉推板半成品-MY7-TR1030L(黑色)	1	43	GF90324-1	WARING PLATE	扭力推盤	1
	CI50212	F/R SWITCHING ELEMENT-MY8-TR0205L	正反轉推板半成品-MY8-TR0205L(橙色)	1	44	GE92389	WARING SPRING-MY7-TR1030L	扭力彈簧-MY7-TR1030L	1
16	E33105-1	LED	LED	1		GE92388	WARING SPRING-MY8-TR0205L	扭力彈簧-MY8-TR0205L	1
17A	E32201-2	HEAT SINK (UP)	散熱片 (上)	1	45	GY21321	WARING SPRING BASE	止推盤	1
	E32201-2	HEAT SINK-ESD (UP)	散熱片-防靜電 (上)	1	46	GN30434	BEARING	軸承	1
17B	E32204-1	HEAT SINK (DOWN)	散熱片 (下)	1	47	G20206-1	CLUTCH CASE	下離合器筒	1
	E32204-2	HEAT SINK-ESD (DOWN)	散熱片-防靜電 (下)	1	48	GO21341-7	BIT SPRING	起子頭彈簧	1
18	W50109-4	CLAMP	散熱片夾簧	1	49	GJ21351-3	BIT SLEEVE	起子頭帽	1
	W50109-5	CLAMP-ESD	散熱片夾簧-防靜電	1	50	GQ21361	"C" RING	起子頭帽C環	1
19	CH20102	SCREW FOR HOUSING	外殼螺絲	3	51	GL21371	TORQUE ADJUST PIN	扭力調整棒	4
20	MI90584	PILOT ROD	引導棒無導磁	1	52	GM21381	TORQUE ADJUST RING	扭力調整環	1
21	CH20102-24	SCREW FOR MOTOR	馬達螺絲	2	53	GS21391	"C" RING	調整環C環	1
22	MO80052CE	MOTOR ASSEMBLY-MY7-TR1030L	馬達整組-MY7-TR1030L	1	54	CD22078	COUPLER	前鎖環	1
	MO80050CE	MOTOR ASSEMBLY-MY8-TR0205L	馬達整組-MY8-TR0205L	1		CD22078-1	COUPLER-ESD	前鎖環-防靜電	1
23	M11317	GEAR 16T	馬達主齒 16T	1	55	CH30674-2	GROUNDING MEANS	接地線	1
24	MG30081-2	PILOT ROD	陶瓷棒	1	56	CH20102-31	SCREW	螺絲	4
25	GZ83001-1A-01	CLUTCH ASSEMBLY-MY7-TR1030LA	離合器成品-MY7-TR1030LA	1	57	P11020-4	INSULATING WASHER-ESD(UP)	絕緣墊片-防靜電(上)	2
	GZ83001-1B-01	CLUTCH ASSEMBLY-MY7-TR1030LB	離合器成品-MY7-TR1030LB	1	58	P11020-4	INSULATING WASHER-ESD(DOWN)	絕緣墊片-防靜電(下)	2
	GZ83001-2B-01	CLUTCH ASSEMBLY-MY8-TR0205LB	離合器成品-MY8-TR0205LB	1	59	CK28031-1	TRIGGER SPRING	壓板彈簧	1
	GZ83001-5B-01	CLUTCH ASSEMBLY-MY7-TR1030LB9.5	離合器成品-MY7-TR1030LB9.5	1	60	W50104-7	GASKET	矽膠墊片	2
	GZ83001-4B-01	CLUTCH ASSEMBLY-MY8-TR0205LB9.5	離合器成品-MY8-TR0205LB9.5	1	61	G21305-3	SPACER	起子頭帽墊圈	1
26	MI30511-4	PILOT ROD	引導棒無導磁	1	62	G21438	WASHER	起子頭帽墊片	1



MY7-TR1030P
MY8-TR0205P

CUSTOMER	DWG NAME	PRODUCTION NO.			
ITEM NO:	DWG NO:				
TITLE:	MATERIAL	SHRINK	THIRD ANGLE PROJECTION		
	DES. BY	DATE	UNIT	SCALE	SHT NO.
	CHKD. BY	DATE			OF SHTS.
	APPD. BY	DATE			

NO	PARTS NO	PARTS NAME-E	PARTS NAME-C	Q'ty	NO	PARTS NO	PARTS NAME-E	PARTS NAME-C	Q'ty
1	AA50005A-B6P-7N	CORD ASSEMBLY 3M "I/O Signal Control Box" TYPE	電源線 3M (訊號傳輸控制裝置)	1	26	GK21181	"C" RING	齒輪固定C環	1
2	AA50001-169-1N	CORD ASSEMBLY-150mm	檔尾線-150mm	1	27	GI21191	IRON WASHER	齒輪固定片	1
3	CJ20011-4	SUSPENSION RING	起子吊環	1	28	GH92238	IDLE GEAR 14T	上游星齒輪 14T	3
4	C40792-8F-BC6P	HOUSING-UNDERSIDE	下蓋半成品	1	29	GG21514	GEAR SEAT	三點上齒盤	1
	C40792-10F-BC6P	HOUSING-UNDERSIDE-ESD	下蓋半成品-防靜電	1	30	G20112	CENTRAL GEAR	中心齒	1
5	CA80005	HOUSING-UPSIDE	上蓋	1	31	GH92238-1	IDLE GEAR	下游星齒輪	3
	CA80005-2	HOUSING-UPSIDE-ESD	上蓋-防靜電	1	32	GG21514-1	GEAR SEAT	三點下齒盤	1
6	CE50152-7	PUSH ROD	開關推桿半成品	1	33	GA81101	GEAR CASE	上離合器筒	1
7	CE80001	FIXTURE	三合一固定片	1	34	GN21251	MAIN BEARING	離合器主軸承	2
8	CH30200	SCREW	三合一固定片 螺絲	2	35	GW21532	IRON RING	鐵墊圈	1
9	E33105-1	LED	LED	1	36	GX90305-2	CAM	上離合器頭	1
10	EG31421-8F	PCB-CHANGEVER	機板成品(正反)	1	37	GP30361	STELL BALLS(5 φ)	跳脫鋼珠(5 φ)	3
11	CI50212-1	F/R SWITCHING EPAMENT-MY7-TR1030P	正反轉推板半成品-MY7-TR1030P(黑色)	1	38	GF90322	WARING PLATE	扭力推盤	1
	CI50212	F/R SWITCHING EPAMENT-MY8-TR0205P	正反轉推板半成品-MY8-TR0205P(橙色)	1	39	GV90331	SPRING CAP	扭力推盤蓋	1
12	H10201	SHUT OFF SWITCH	剎車開關	1	40	GO90341	INNER SPRING	下壓式彈簧	1
13	CH90151-1	SCREW FOR SHUT OFF SWITCH	剎車開關螺絲	2	41	GU30370	STOP PILOT	停止用酒杯	1
14	EG31537-10A-2.0	PCB-MY7-TR1030P	機板成品-MY7-TR1030P	1	42	GE92389-1	WARING SPRING-MY7-TR1030P	扭力彈簧-MY7-TR1030P	1
	EG31537-1A-2.0	PCB-MY8-TR0205P	機板成品-MY8-TR0205P	1		GE92388-1	WARING SPRING-MY8-TR0205P	扭力彈簧-MY8-TR0205P	1
15A	E32201-2	HEAT SINK (UP)	散熱片 (上)	1	43	GP30351	STELL BALLS(4 φ)	酒杯鋼珠(4 φ)	2
	E32201-2	HEAT SINK-ESD (UP)	散熱片-防靜電 (上)	1	44	GD91402A	SHAFT-A TYPE	傳動軸-A	1
15B	E32204-1	HEAT SINK (DOWN)	散熱片 (下)	1		GD91402B	SHAFT-B TYPE	傳動軸-B	1
	E32204-2	HEAT SINK-ESD (DOWN)	散熱片-防靜電 (下)	1		GD91402B-2	SHAFT-B9.5 TYPE	傳動軸-B9.5	1
16	W50109-4	CLAMP	散熱片夾簧	1	45	GP21291A	STEEL BALLS-A TYPE(3 φ)	起子頭帽鋼珠-A(3 φ)	2
	W50109-5	CLAMP-ESD	散熱片夾簧-防靜電	1		GP21291B	STEEL BALLS-B TYPE(2.5 φ)	起子頭帽鋼珠-B(2.5 φ)	2
17	CH90154	SCREW	螺絲	2	46	GY21321	WARING SPRING BASE	止推盤	1
	CH20510	SCREW-ESD	螺絲-防靜電	2	47	GB30443-1	CLUTCH CASE A'SSY	下離合器筒半成品	1
18	CH20102	SCREW HOUSING	外殼螺絲	3	48	GO21341-1	BIT SPRING	起子頭彈簧	1
19	MI90583	PILOT ROD	引導棒無導磁	1	49	GJ21351	BIT SLEEVE	起子頭帽	1
20	CH20102-24	SCREW	螺絲	2	50	GQ21361	"C" RING	起子頭帽C環	1
21	MO80052CE	MOTOR ASSEMBLY-MY7-TR1030P	馬達整組-MY7-TR1030P	1	51	GL21371	TORQUE ADJUST PIN	扭力調整棒	4
	MO80050CE	MOTOR ASSEMBLY-MY8-TR0205P	馬達整組-MY8-TR0205P	1	52	GM21381	TORQUE ADJUST RING	扭力調整環	1
22	M11317	GEAR 16T	馬達主齒 16T	1	53	GS21391	"C" RING FOR GM21381	調整環C環	1
23	MG30081-2	PILOT ROD	陶瓷棒	1	54	CD22078	COUPLER	前鎖環	1
24	GZ83002-1A	CLUTCH ASSEMBLY-MY7-TR1030PA	離合器成品-MY7-TR1030PA	1		CD22078-1	COUPLER-ESD	前鎖環-防靜電	1
	GZ83002-1B	CLUTCH ASSEMBLY-MY7-TR1030PB	離合器成品-MY7-TR1030PB	1	55	CH30674-2	GROUNDING MEANS	接地線	1
	GZ83002-2B	CLUTCH ASSEMBLY-MY8-TR0205PB	離合器成品-MY8-TR0205PB	1	56	CH20102-31	SCREW	螺絲	4
	GZ83002-5B	CLUTCH ASSEMBLY-MY7-TR1030PB9.5P	離合器成品-MY7-TR1030PB9.5	1	57	P11020-4	INSULATING WASHER-ESD(UP)	絕緣墊片 0.8mm-防靜電(上)	2
	GZ83002-4B	CLUTCH ASSEMBLY-MY8-TR0205PB9.5	離合器成品-MY8-TR0205PB9.5	1	58	P11020-4	INSULATING WASHER-ESD(DOWN)	絕緣墊片 0.3mm-防靜電(下)	2
25	MI30511-4	PILOT ROD	引導棒無導磁	1	59	W50104-7	GASKET	矽膠墊片	2

